

beauty is inside



ECOTECK



To upload the firmware to the Bootloader, a program capable of managing the Bootloader memory cells must be used; “ECOLOADER” is a simple software designed for uploading the firmware to the “bootloader” device.

This program is available for download from the “downloads area” of our website www.ecoteck.it. It’s available to all users who have subscribed to customer support and have received the above device.

The “ECOLOADER” version has a licence valid for a limited period of 6 months. To renew the licence follow the procedure described at point 3 of this manual.

After registering, the user can access the download area with the user name and the password set by the user when filling the form.

1 - REGISTRATION FOR ENTERING THE DOWNLOAD AREA:



Copyright © 2005-08 by Ecoteck Srl - 25036 Palazzolo - Brescia (Italy) - P.I.02408740989 - credits - Agg. Novembre 2008

Area download - Area riservata - Numero verde 800464330

Area download -

a) Access the www.ecoteck.it site as shown in the picture and click the “Download Area” link”.

Accesso Utente

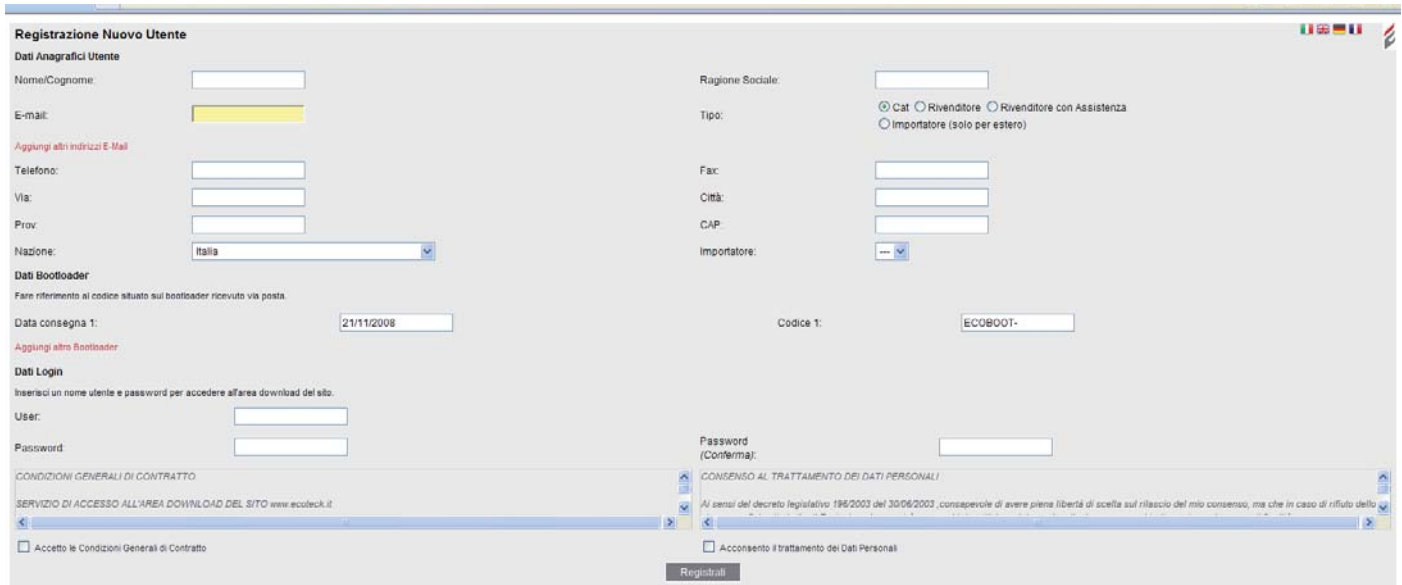
Username:

Password:

Entra

- [Richiedi Password](#)
- [Cambia Password](#)
- [Registrazione nuovo utente](#)

b) If accessing the site for the first time, the registration procedure must be completed. Click “Register new user” and fill in the information required.



c) Fill the registration form; all fields must be filled. Please provide a valid e-mail address: this will be used by the manufacturer to notify the user of any firmware, parameters, or “Ecoloader” program updates. The fields are divided into three groups:

- User information - this must be provided to enabled the manufacturer to compile a complete and efficient database for traceability purposes;
- Bootloader Data - identification number for the traceability of the device owned by the user (to be found on the front of the Bootloader);
- Username and Password - to be used in the “Download Area”, to access the section of the website for the download of the firmware, the parameters, and the “Ecoloader” application.

Click “Register”, after agreeing to the treatment of personal information.

d)The system will record all information entered and create a reserved area for each user. After completing the registration procedure, the system will send the user an e-mail with the username and the password.

Accesso Utente

Username:

Password:

Entra

- [Richiedi Password](#)
- [Cambia Password](#)
- [Registrazione nuovo utente](#)

e) Enter the USERNAME and PASSWORD specified during the registration procedure, and click ENTER to access the Down-



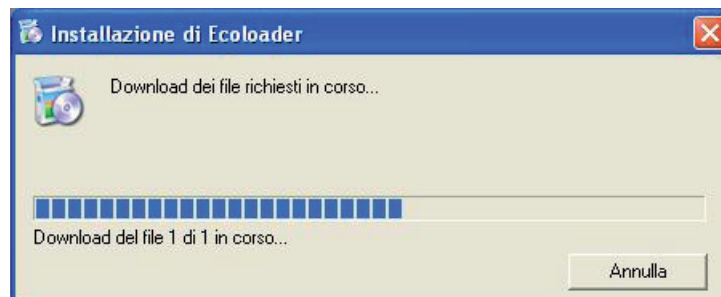
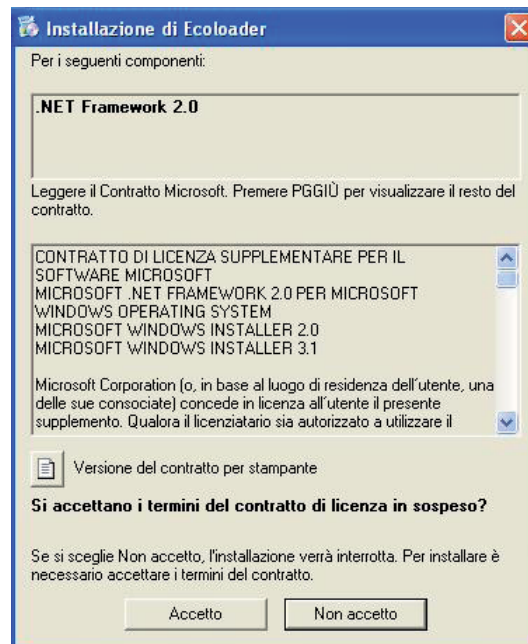
f) It is now possible to access, display and download the Bootloader management program

2 - INSTALLING THE “BOOTLOADER” MANAGEMENT SOFTWARE:

2a - Click “PROGRAMS”, followed by the program icon (compatible with the following operating systems: Windows 2000, Windows XP and Windows Vista):



Install Ecoloader.exe



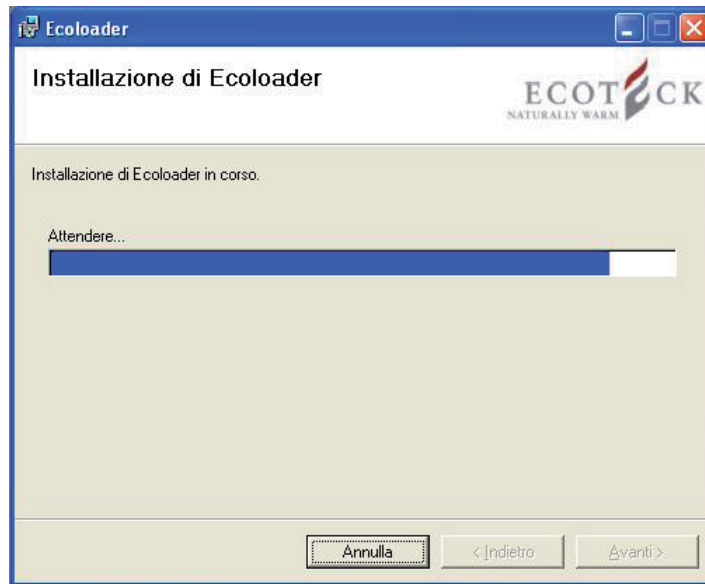
2b - Click ACCEPT if you want to install .NET Framework.



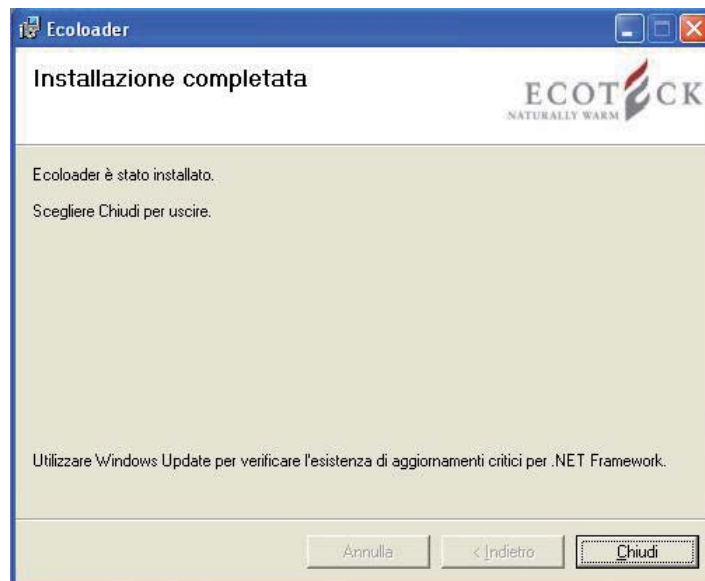
2c – Click “Next” and select the program installation folder. Click “Next”..



2d – Click “Next”.



2e - The installation process begins.



2f - When installation is complete click “Exit”.



2g - After closing the installation screen look on the Desktop for the program icon. Click the icon to open the program

3- PROCEDURE FOR THE ACTIVATION AND RENEWAL OF THE PROGRAM

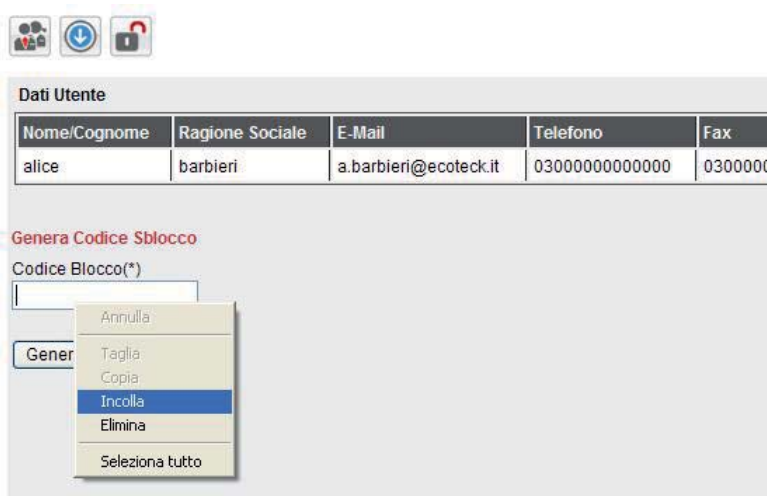



3a - When accessing the program for the first time, after activation or renewal, click the “Ecoloader” icon. The message “Application unlocking code not entered” will appear. Click OK..



Fig.1

3b - After clicking OK, a new screen will appear, with a locking code, and a field where the unlocking code must be entered. Copy the locking code and proceed to the next step



3c - Access the download area by entering user name and password, click on the  icon and enter the previously copied code in the “Locking code” field (copy and paste using the right mouse button).

Dati Utente

Nome/Cognome	Ragione Sociale	E-Mail	Telefono	Fax
alice	barbieri	a.barbieri@ecoteck.it	0300000000000000	0300000

Genera Codice Sblocco

Codice Blocco(*)

Risultato:
54C7C-2AE7E

Dati Utente

Nome/Cognome	Ragione Sociale	E-Mail	Telefono	Fax
alice	barbieri	a.barbieri@ecoteck.it	0300000000000000	0300000

Genera Codice Sblocco

Codice Blocco(*)

Risultato:
54C7C-2AE7E

- Taglia
- Copia
- Incolla
- Seleziona tutto
- Stampa...
- Anteprima di stampa...

Ecoteck - Attivazione

Codice di blocco:

[Collegarsi al sito Ecoteck per generare il codice di sblocco.](#)

Sblocco software

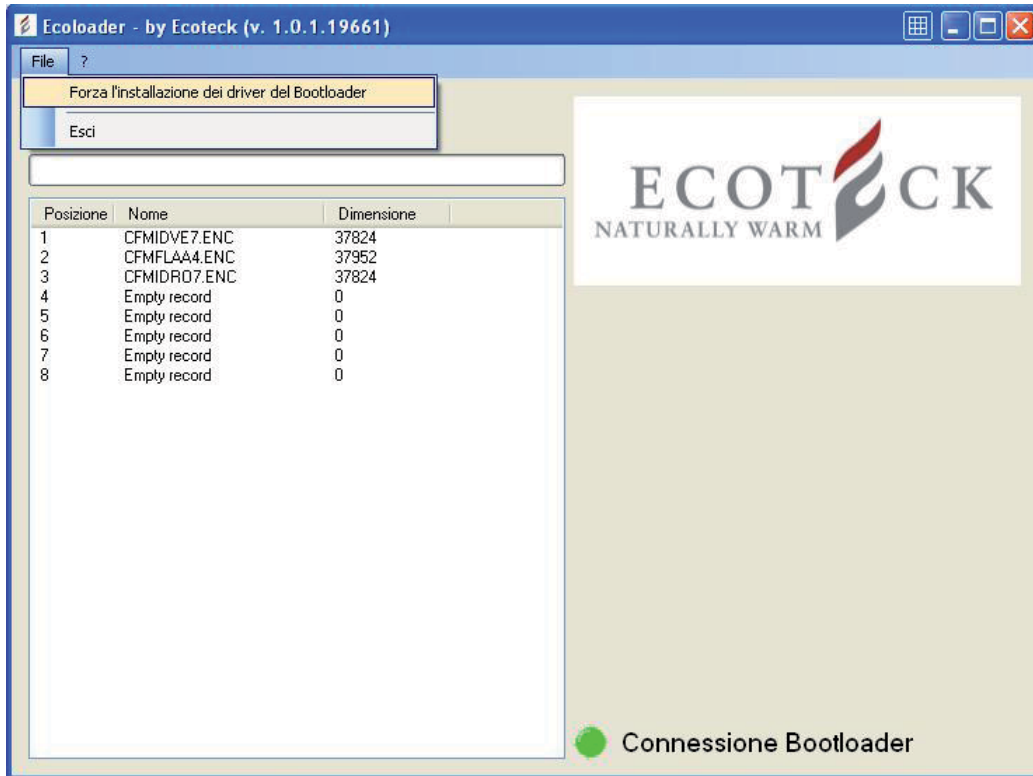
Codice Attivazione:

- Annulla
- Taglia
- Copia
- Incolla
- Elimina
- Seleziona tutto

3d - Click “Generate” to obtain the unlocking code to enter in the field shown on fig. 1. Once this procedure has been completed the program will be activated

4 - PROCEDURE FOR THE CONFIGURATION OF THE BOOTLOADER ON THE PC

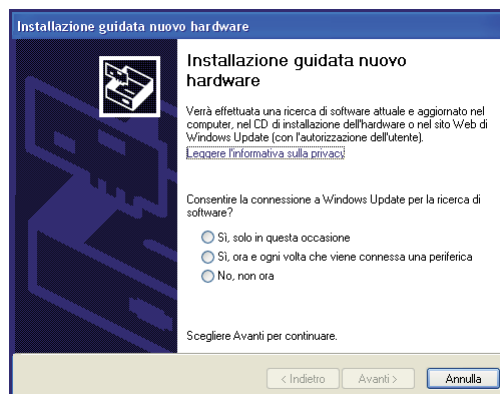
4a - The software installed contains the bootloader drivers. To configure the device, this must be connected to the USB port of the computer using A-B USB cable (fig. 2 - not supplied). As soon as it has been recognised by the PC, follow the procedure described below. If the bootloader fails to complete the self configuration procedure, install the drivers as specified in the paragraph “exceptions”.



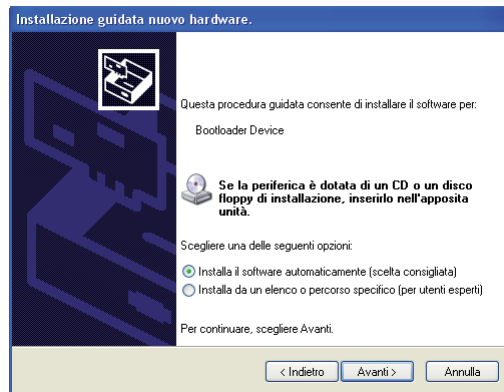
Exceptions: If upon connection of the bootloader automatic loading of the recognition drivers fails, at the first start-up, connect the device and select “File - Install bootloader driver” from the program to configure the drivers correctly. Answer OK to the question that follows..



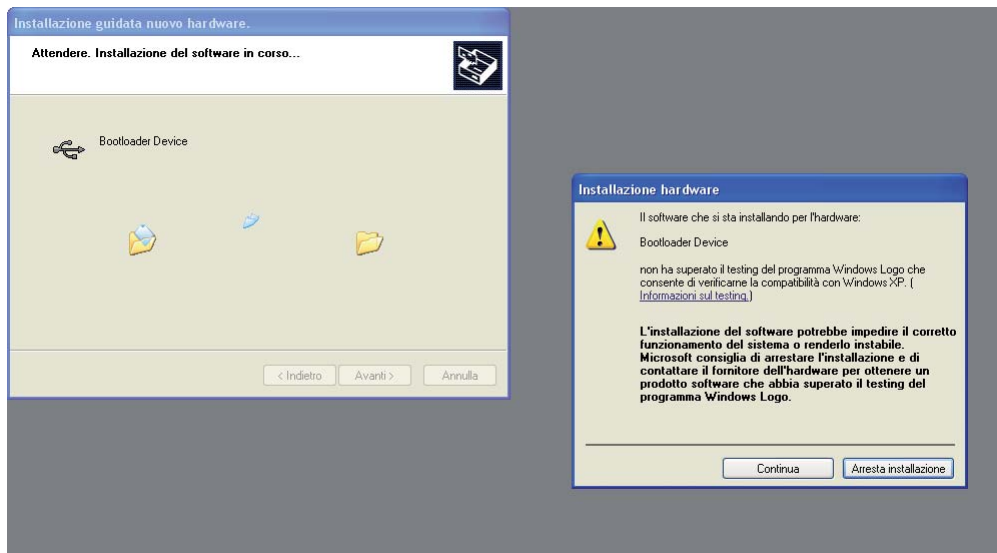
fig.2



4b - Select “No, not now” and click “Next”.



4c - Select “Install the software automatically” and click “Next”



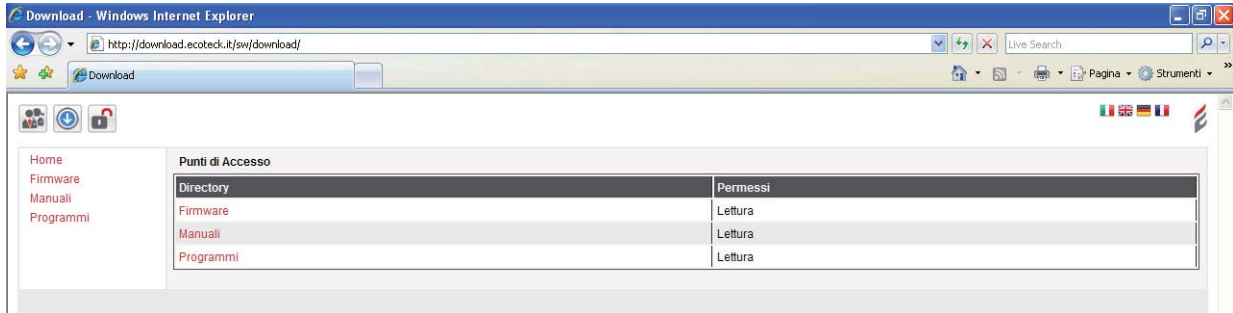
4d - During installation, the operating system will perform a compatibility tests for the drivers being installed. After completion of this test, the results will be displayed. Click “Continue”.

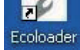


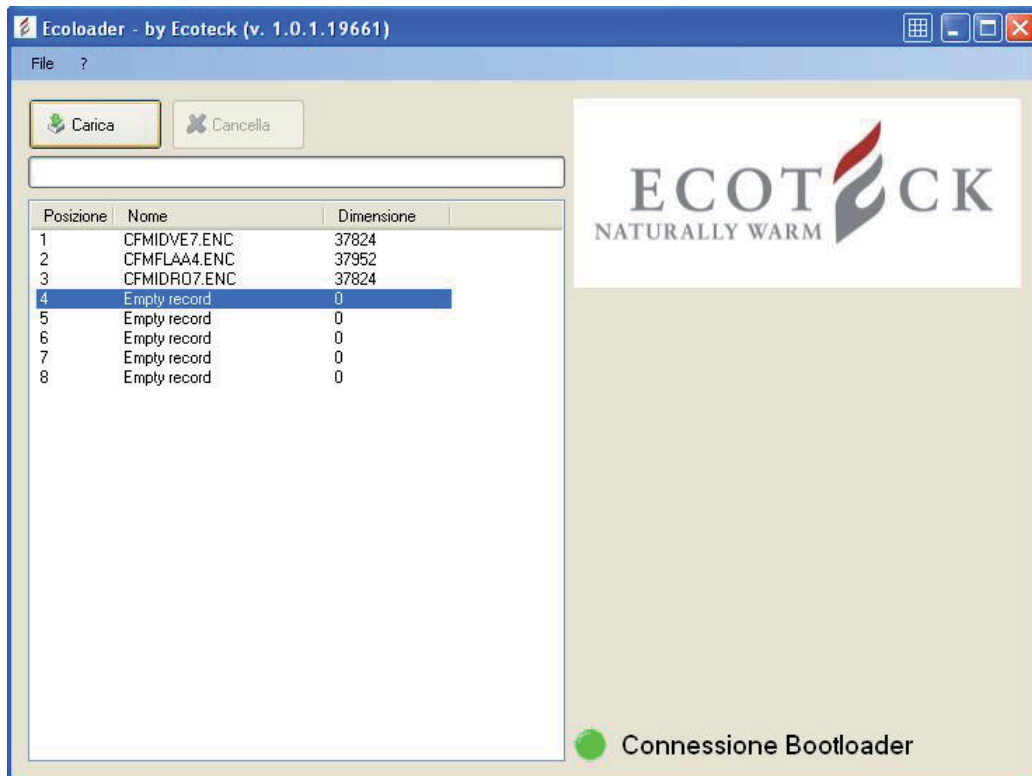
4e - When installation is complete, press “End” to open the “Ecoloader” program using the connection created on the desktop during the installation of the software.

5 - PROCEDURE FOR THE DOWNLOAD OF THE FIRMWARE FROM THE SITE AND UPLOADING TO THE

Once the installation of the software and the configuration of the device have been complete, download the update firmware from the download area (Air, Box or Hydro). Access the download area using the username and password created previously, open the “Firmware” folder, and download the desired firmware version.

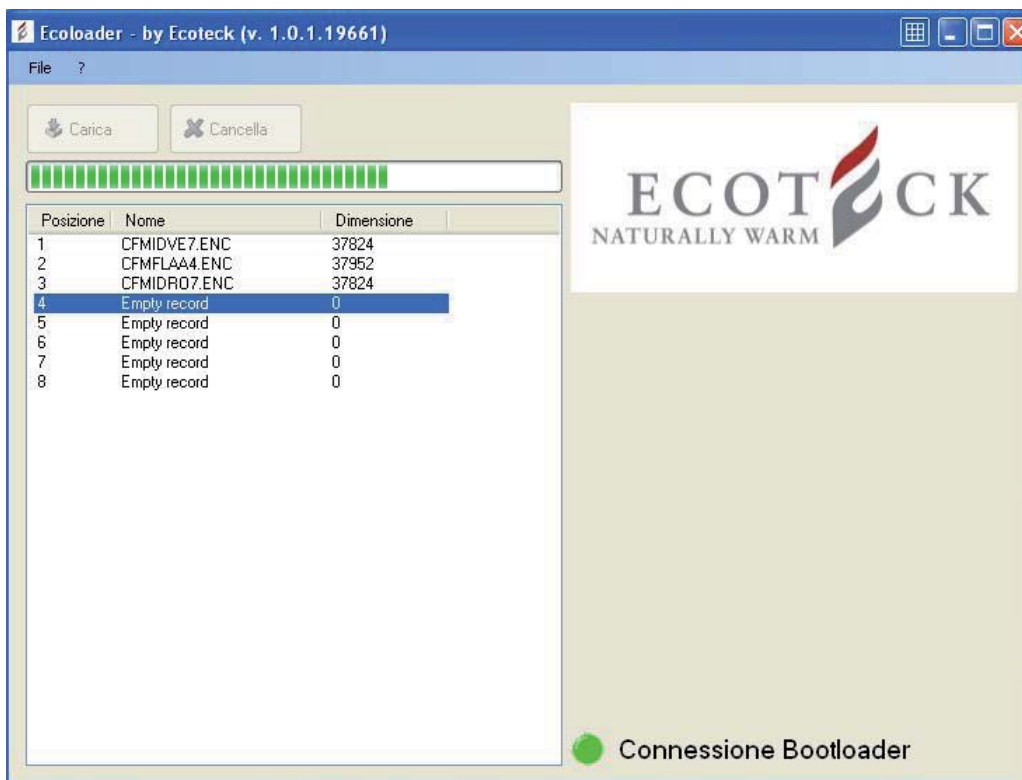
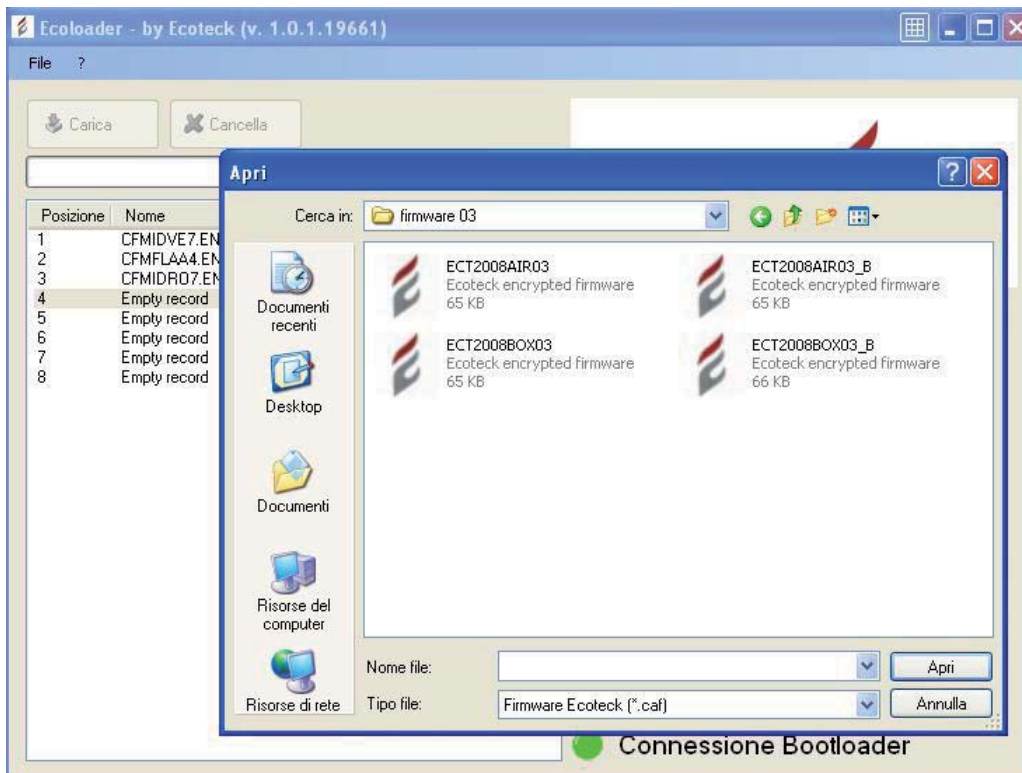


Now open the program clicking the icon  ,The software will analyse the data saved (if applicable) on the BOOTLOADER



Step 1:

With the mouse select an empty memory location (showing “Empty record”) and then click “Load “.The user will be prompted to enter the path to recover the firmware from its saved location. Once the .caf file has been opened (this format is only compatible with the “Ecoloader” software supplied by Ecoteck s.r.l.), wait for it to be loaded on the Bootloader. To load other firmware files on other empty memory locations of the Bootloader repeat the same operation.



Step 2:

If all memory locations are already taken, they must be freed before more new firmware can be uploaded by the user; simply select the memory location to be freed with the mouse and click “Erase Record”; once the memory location has been freed, “Empty record” will be displayed.

Now repeat Step 1 to upload a new firmware.

IMPORTANT: It is important that the user remembers in which locations of the Bootloader the various firmware files have been saved, in order to avoid loading on the card a firmware that is not suitable for the type of stove being updated.

6 - USING THE BOOTLOADER TO UPLOAD A FIRMWARE:

IMPORTANT! The following operations must be performed without USB connection.

From the bootloader use the micro-switches to select the firmware to be installed on the card



Example:
Lower the cell containing the firmware ECT2008AIR03

a) Move the switch of the stove to the “O” position (OFF).

b) Connect the Bootloader to the card. For this operation always only use the serial cable supplied (black cable supplied with Bootloader);



Fig. punto a



Fig. punto b

c) Move the switch of the stove to the “1” position (ON).

d) The green LED will flash to indicate that the program is loading. Once loading is complete, the LED will stop flashing, but will remain on



Fig. punto c



Fig. punto d

If the red LED comes on, it means that an error has occurred while loading the firmware on the Bootloader. Repeat the operation

7 - FIRMWARE/PARAMETERS RELATION

A firmware update may entail the introduction of new parameters, or the update of the existing parameters. Therefore, from the DOWNLOAD AREA it will also be possible to download the parameters for the last available firmware update. It is recommended that every time the manufacturer notifies that a new firmware version is available in the download area, also the parameters are updated.



Via Kupfer, 31 - 25036 Palazzolo sull'Oglio / BS - ITALY Tel.
+39.030.7402939 Fax. +39.030.7301758 Internet : www.ecoteck.it E-mail :
info@ecoteck.it